

# EXODUS 18

OFF ROAD

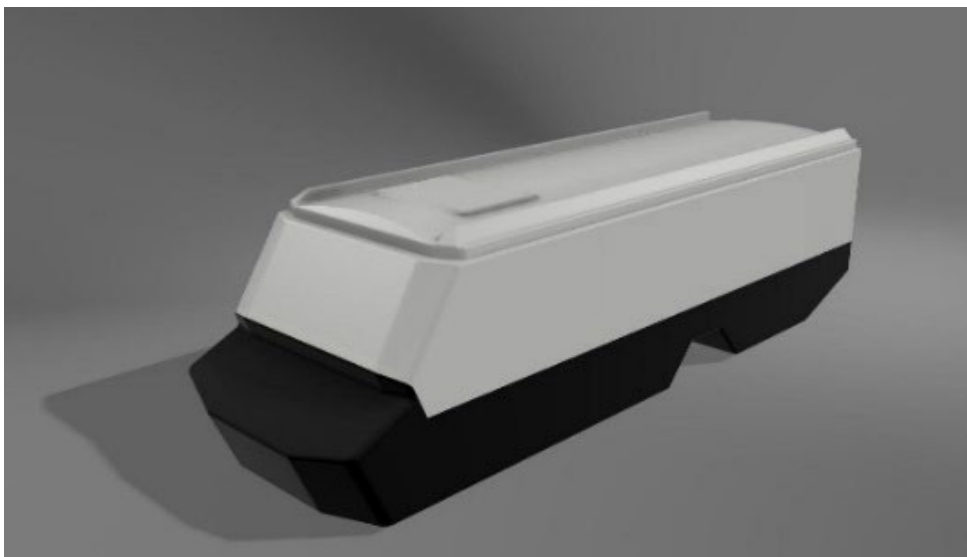
## Design Considerations

When thinking about the Exodus 18 we looked at how we could improve on our already very successful Exodus 11, 14 and 16 Models.

Initial thoughts were to make it lower, possibly wider, no heavier due to wanting to retain a single axle, and being able to incorporate bunks as well internal toilet / shower.

In fact, nothing was ruled out in trying to improve our already successful Exodus range.

We also wanted to change the look slightly to a more angular / faceted style giving the feel of extra internal length and space without adding substantially to the overall length.



This was an exhaustive process starting with industrial designers, then our own in-house Shipwright Team building scale models to compare and determine design directions before a full size model was built.

It became apparent with our first full size model making it 6" lower that while it looked good on paper and in model form was impractical, and took the design backwards in that having something now to show and sit in existing customers pointed out the height was critical to be able to sit up in bed with the roof down.

This made for a good night's sleep in stormy conditions as well fully utilising the superior insulated construction of all Exodus models.

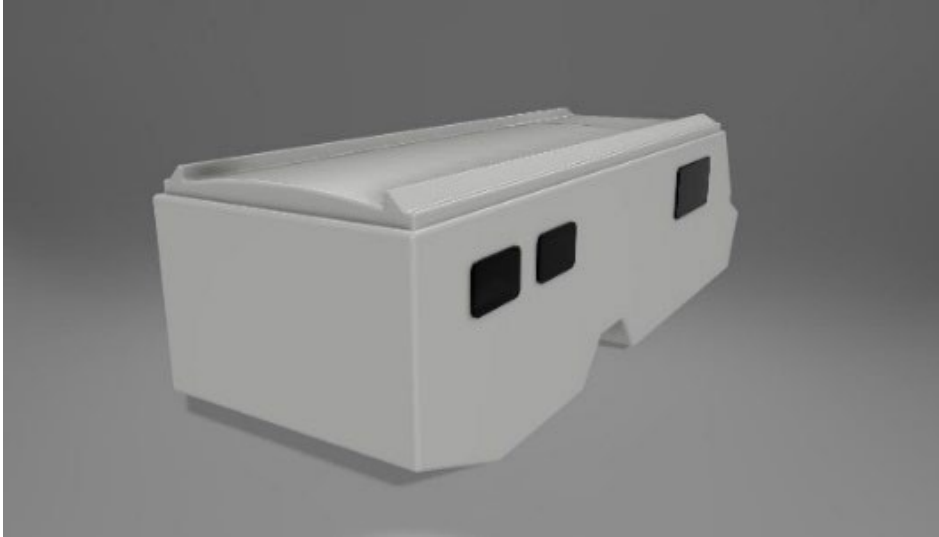
Back to the drawing board! Raise model 150mm! This also allowed for windows above bunks so everyone could look out, whilst giving light and ventilation even when the bunk enclosure is fitted.

Other considerations were to make the new Exodus 18 no heavier than our Exodus 16 which was to be achieved by utilising lightweight honeycomb internal structure.

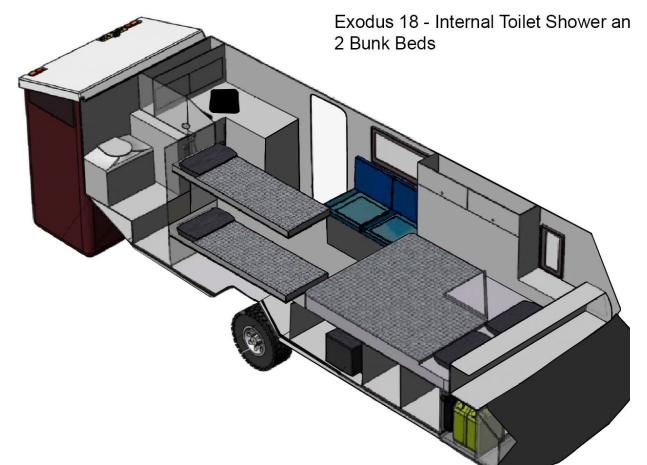
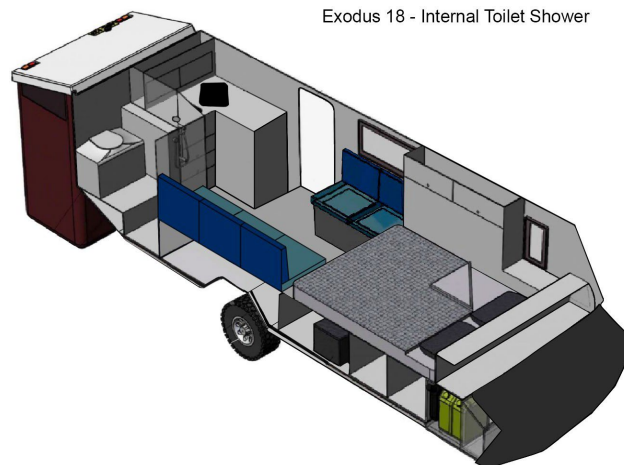
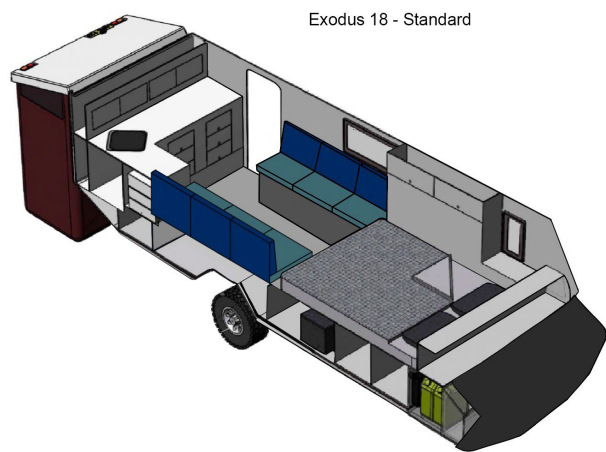
We had already been experimenting taking weight out of our campers gradually over many years to make sure the structure stood up to the rigours of the Australian Outback.



### Design Considerations

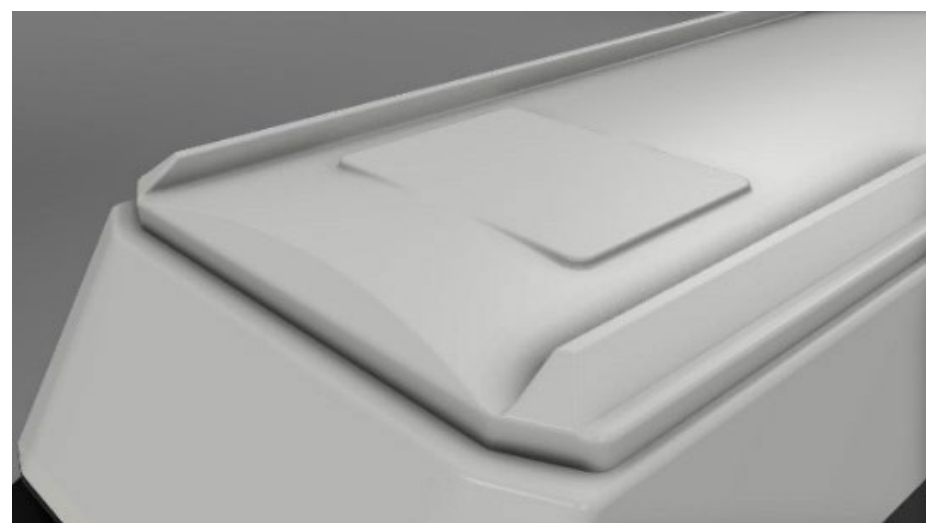


Other design improvements such as raising main bed 80mm to fit an Evakool 95lt Dual Zone fridge/freezer upgraded from the usual 80lt also allowed fitting outdoor table above slide out kitchen, electrical controls fully accessible from the outside of the camper, dual zone composting toilet easily used from inside or outside in the external toilet / shower ensuite pod, curved roof (provides more headroom when closed 1.6m), and with 950w solar panels charging, single button raising with one actuator, we considered having to use up to 4 actuators if we had lowered the overall height.



There are numerous other factors that must also be considered when undertaking a new design such as more efficient construction methods to save further weight, simplify the build process as well add more features.

And, last but not least evolve this new 5th generation design to incorporate all the tried and proven features of our existing builds but taking us into the next decade or so of further development, and building on our large loyal customer base.



Yours sincerely,

David Bradburn  
Managing Director  
Exodus Offroad Campers Pty Ltd